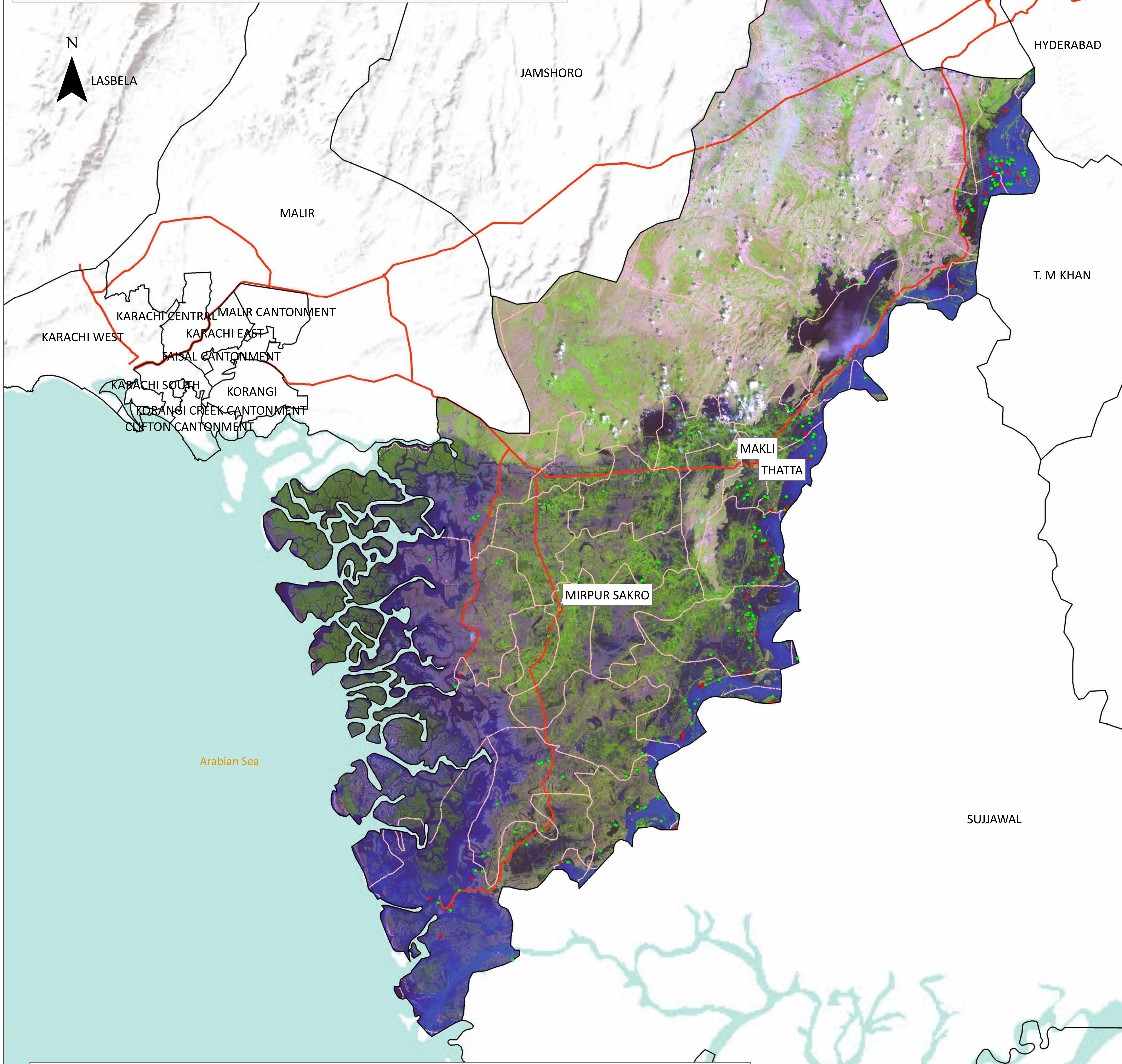


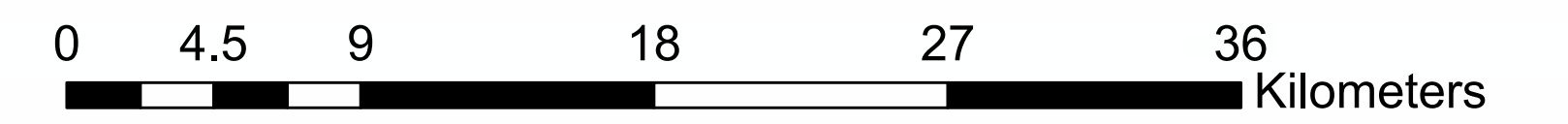
# Flood Inundation in Thatta District



District Profile	21/08/2022	13/09/2022	Change
	District Area	825.84 Sq.Km	
Area Inundated	10.72%	22.70%	+923.23
Crop Land	132,489.17 Acres	593,783.27 Acres	
Crop Land Inundated	22.31%	11.88%	-61,915.91
Rainfall (Jul-Aug)		521 mm	
Population (as per 2017 Census)		965,745	
Affected Union Councils	38 Out of 43	39 out of 43	

Name	Submerged in Water			Surrounded by Water		
	21/08/2022	13/09/2022	Change	21/08/2022	13/09/2022	Change
	DOMANI	7	2	-5	30	14
GHULAMULLAH	5	-	-5	40	2	-38
SUKHPUR	5	-	-5	32	-	-32
KARAMPUR	4	-	-4	33	3	-30
KHAN	3	3	0	41	16	-25
CHATO CHAND	2	1	-1	16	13	-3
CHOUBANDI	2	-	-2	33	1	-32
GUJJO	2	-	-2	34	3	-31
HAJI GHIRANO	2	-	-2	20	4	-16
KETI BUNDAR	2	4	+2	21	13	-8
THATTA I	2	1	-1	27	14	-13
JHURRK	1	7	+6	8	20	+12
KALAN KOT	1	5	+4	22	9	-13
KALRI	1	-	-1	38	4	-34
MAKLI	1	-	-1	23	-	-23
MIRPUR SAKRO	1	-	-1	21	1	-20
BUHARA	-	1	+1	6	-	-6
DHABEJI	-	-	0	10	3	-7
GARHO	-	-	0	18	9	-9
GHARO	-	-	0	5	-	-5
GOONGANI	-	1	+1	1	1	0
JHIMPIR	-	-	0	2	5	+3
JONGO JALBANI	-	-	0	2	-	-2
JUNGSHAHI	-	-	0	4	-	-4
KHARO CHAN	-	1	+1	4	2	-2
KOTRI ALLAH RAKHIO SHAH	-	4	+4	10	8	-2
MAHAR	-	-	0	16	4	-12
TANDO HAFIZ SHAH	-	8	+8	8	18	+10
UDASSI	-	-	0	11	10	-1
DOULAT PUR	-	1	+1	-	-	0
BELO	-	-	0	-	1	+1
BIJORA	-	-	0	-	1	+1
SONDA	-	-	0	-	2	+2
MUREED KHOSO	-	-	0	-	1	+1
Total	41	39	-2	536	182	-354

**Disclaimer:** 30m resolution satellite image has been used for preliminary damage assessment and depicts status of flood inundation as of image acquisition date. The Union Council boundaries and names used in development of this product were obtained from Board of Revenue, Sindh.



Preliminary flood damage assessment carried out using Disaster Management Information System (DMIS) @ Provincial Emergency Operation Center (PEOC), PDMA Sindh.

Source: Landsat 9 Collection 2, 13 September 5: 57 GMT

● Cities/Towns  
● Villages (As per 13-09-2022)  
● Submerged under Water  
● Surrounded by Water  
— Union Councils  
— Highways

Sources: Esri, USGS, NOAA, Sources: Esri, Garmin, USGS, NPS